

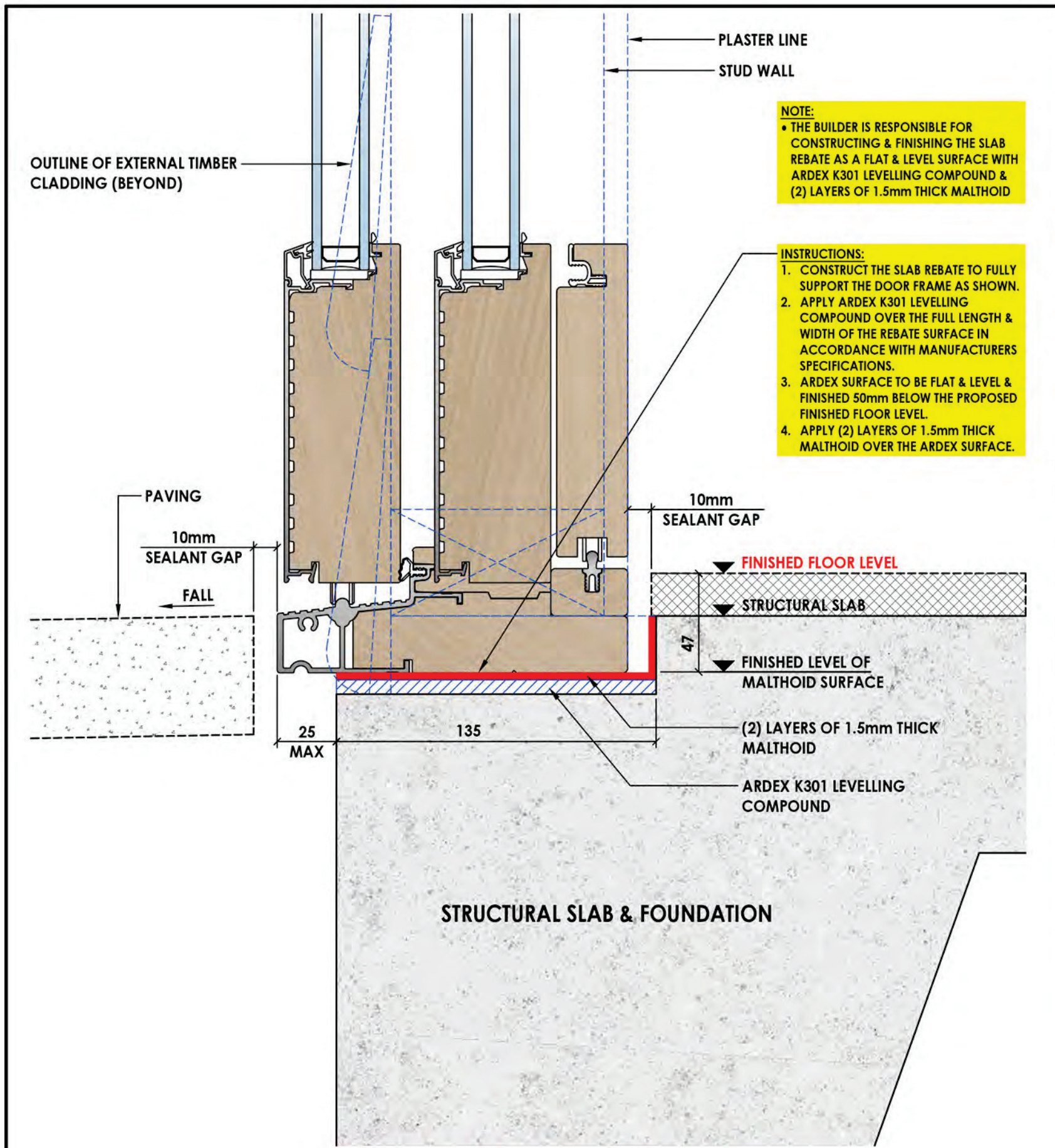


**miglas australia Pty Ltd** ABN: 89 006 634 475  
P.O. Box 32 Montrose Victoria 3765  
Showroom: 57-59 Canterbury Road, Montrose,  
Victoria 3765 Australia  
Telephone: +613 9728 3999  
Facsimile: +613 9728 3555  
Email: sales@miglas.com.au  
[www.miglas.com.au](http://www.miglas.com.au)

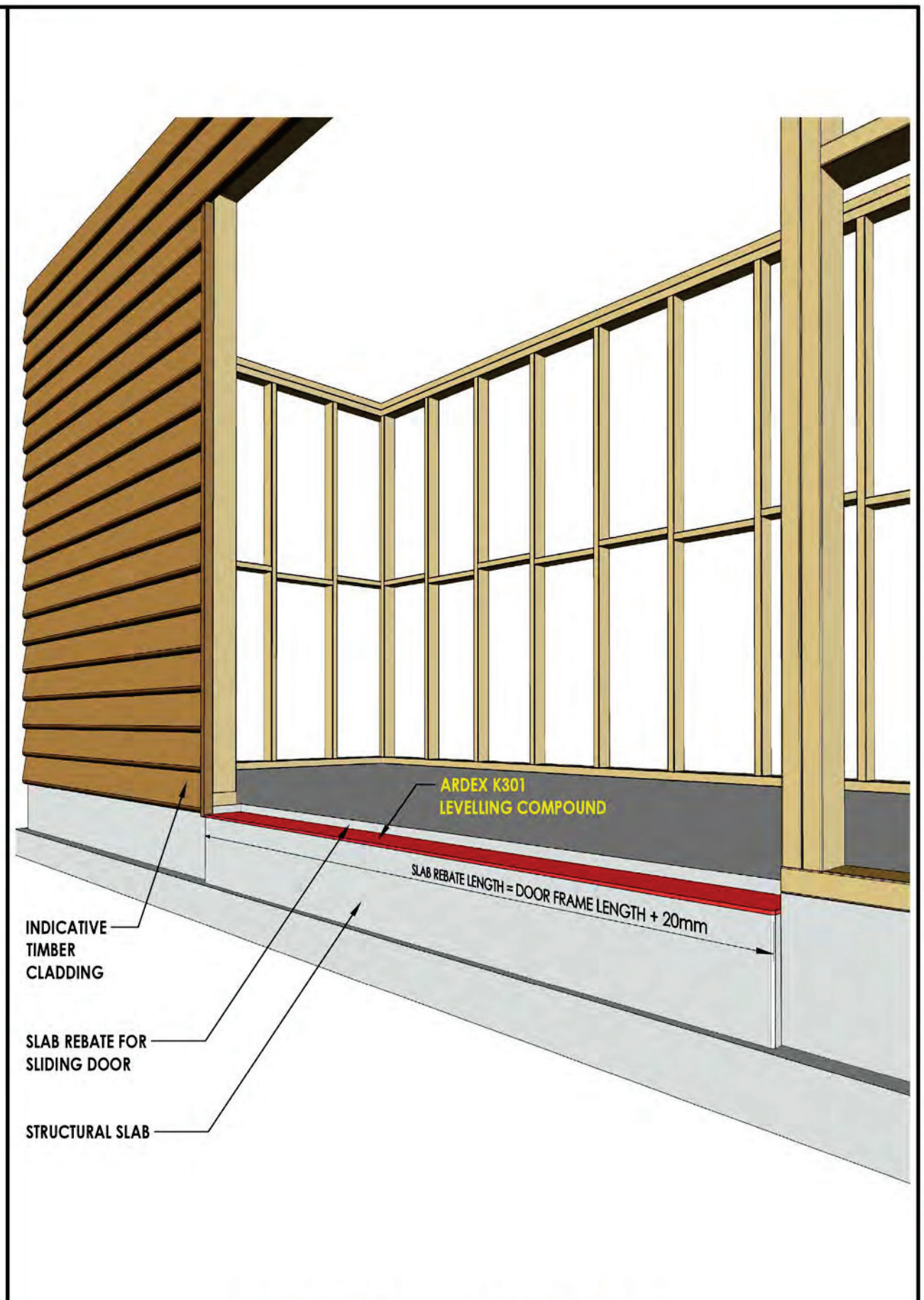
## **INSTALLATION PROCEDURE FOR SLIDING DOOR UNITS**

**Please take care to adhere to the installation procedure to ensure proper operation of your high quality Miglas door system. Failure to follow these steps will result in poor operation or malfunction and expensive service call costs to remedy poor installation by others.**

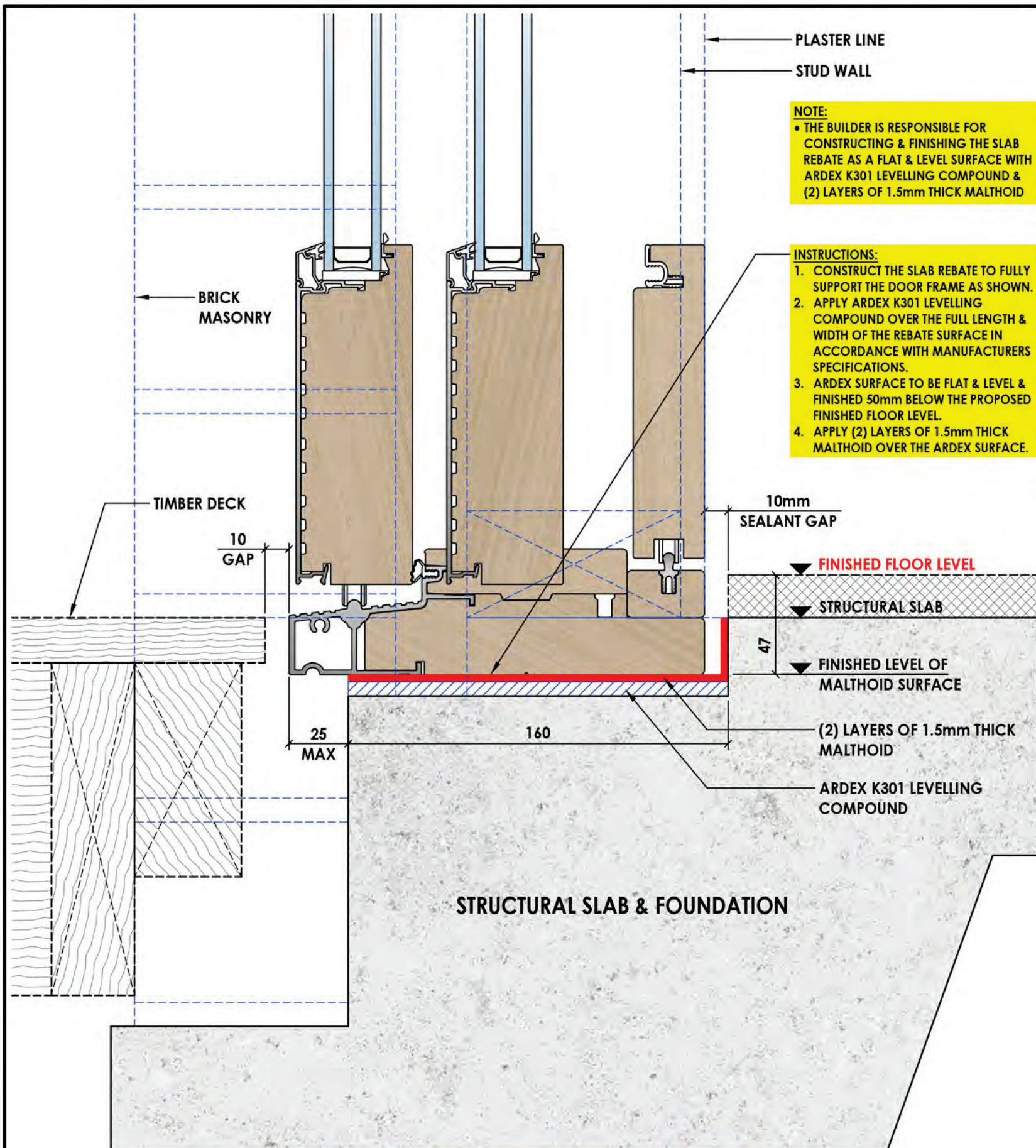
- Take care in **sighting** and **packing** the sill for **straightness** - check with spirit level.
  - The jambs must be parallel – check with straight edge and spirit level. Should be packed and fixed at approx 300 centres.
  - Check to confirm that frame is square by measuring diagonally corner to corner.
  - If the door is not **completely parallel** to the locking style, check and adjust door rollers to align the door with the closing style. If this is not carried out the lock will be hard to operate.
  - **The sill MUST be FULLY SUPPORTED INCLUDING THE GLASS LINE. Regardless of the installation the sill support must be within 25mm of the front edge of the external sill to support the frame weight without deflection.**
- **A Quality timber finish or paint system must be applied as soon as possible after delivery.**
- **Please note that failure of the installer or end user to obey these instructions will free Miglas of any and all product liability.**



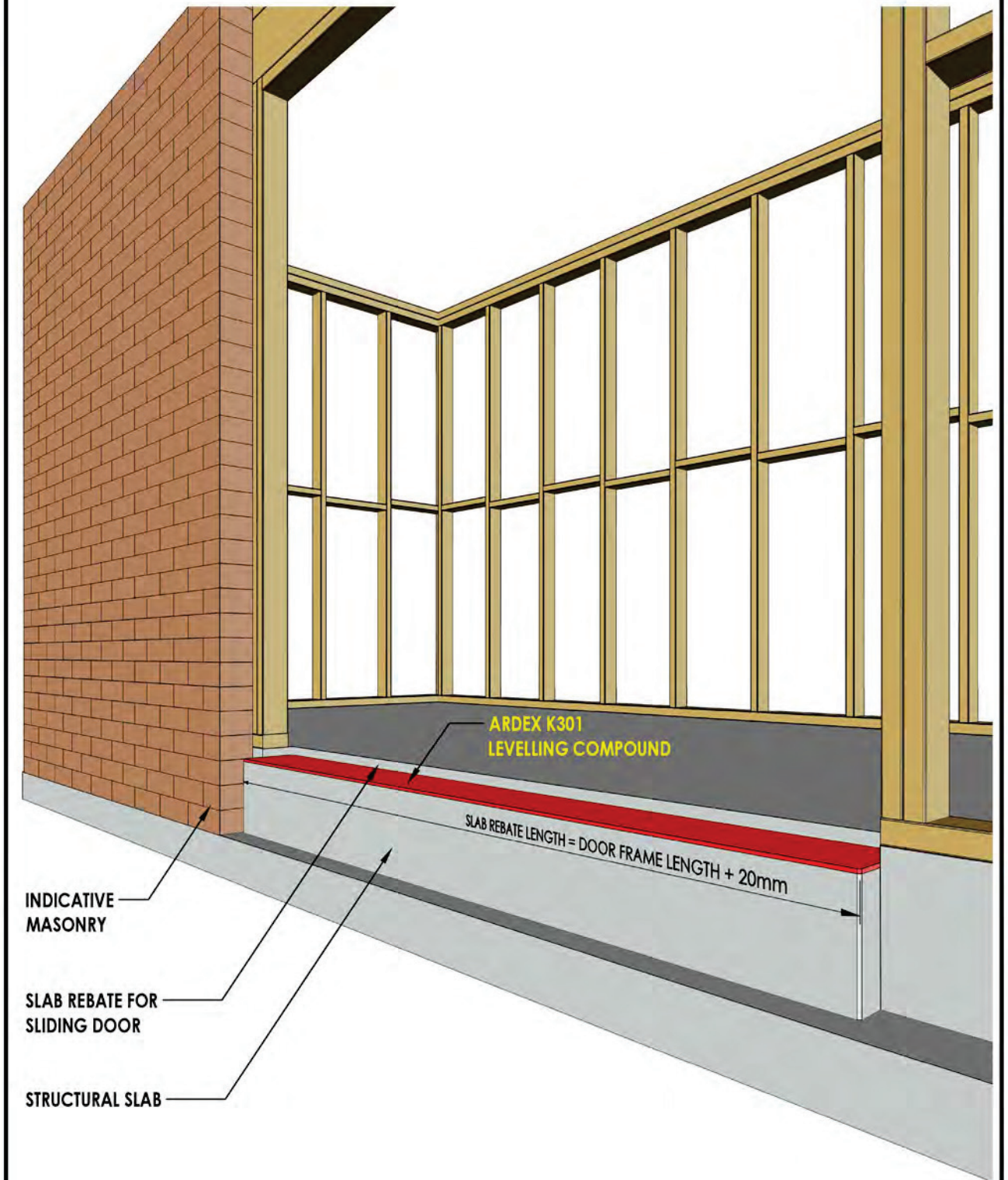
**150mm FRAME SLIDING DOOR**  
**(SLAB REBATE - SECTION DETAIL)**



**SLIDING DOOR SLAB REBATE**  
**(INDICATIVE PERSPECTIVE DETAIL)**



**177mm FRAME SLIDING DOOR**  
(SLAB REBATE - SECTION DETAIL)



**SLIDING DOOR SLAB REBATE**  
(INDICATIVE PERSPECTIVE DETAIL)

No.	Revision	By	Date
A	ISSUED FOR INFORMATION	W.J.F.	05.07.23

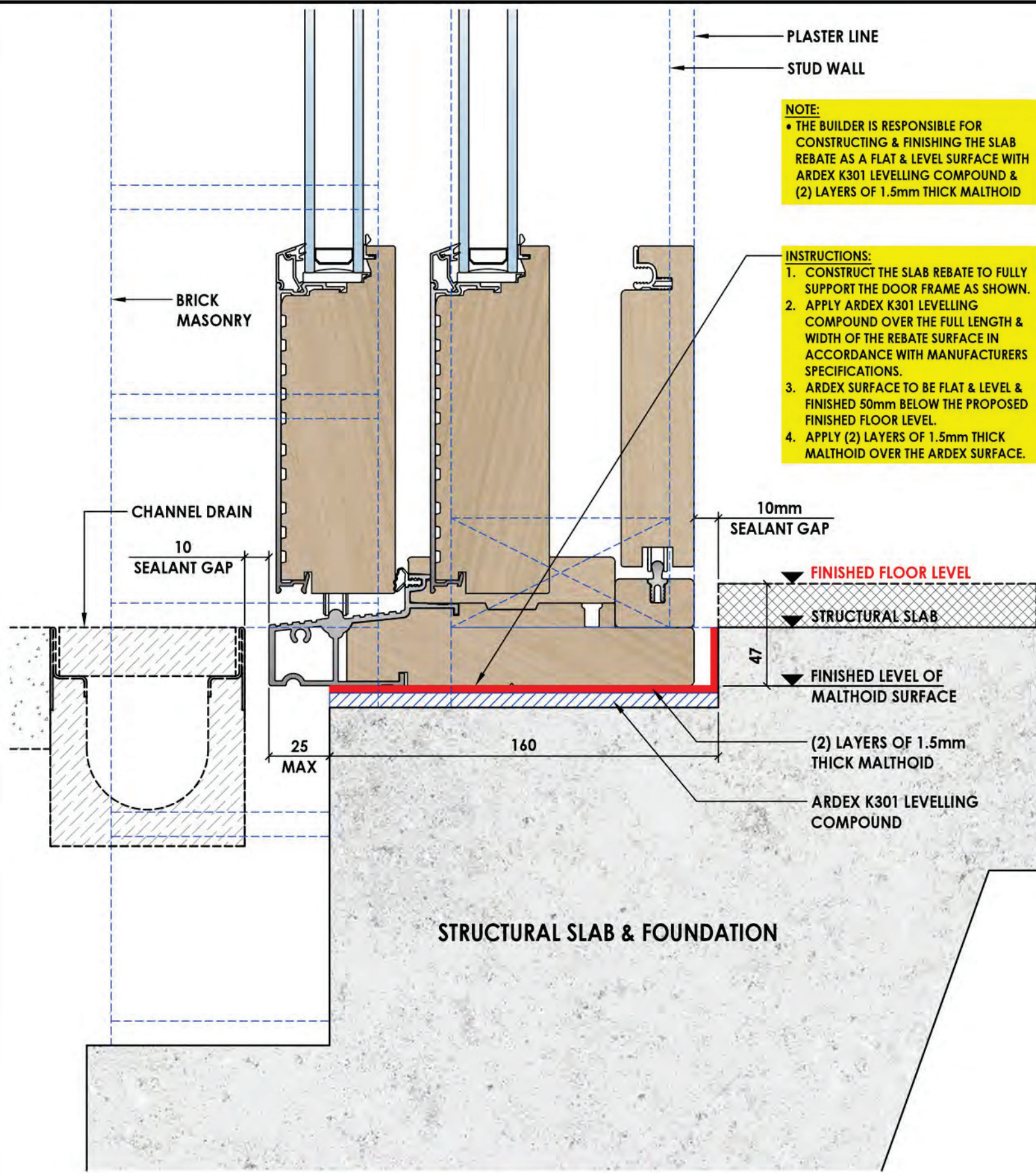
**miglas**  
HIGH PERFORMANCE WINDOWS

57-59 Carletbury Road  
Montrose VIC 3765  
Telephone: 03 9728 3999  
P.O. Box 32, Montrose, VIC 3765  
www.miglas.com.au

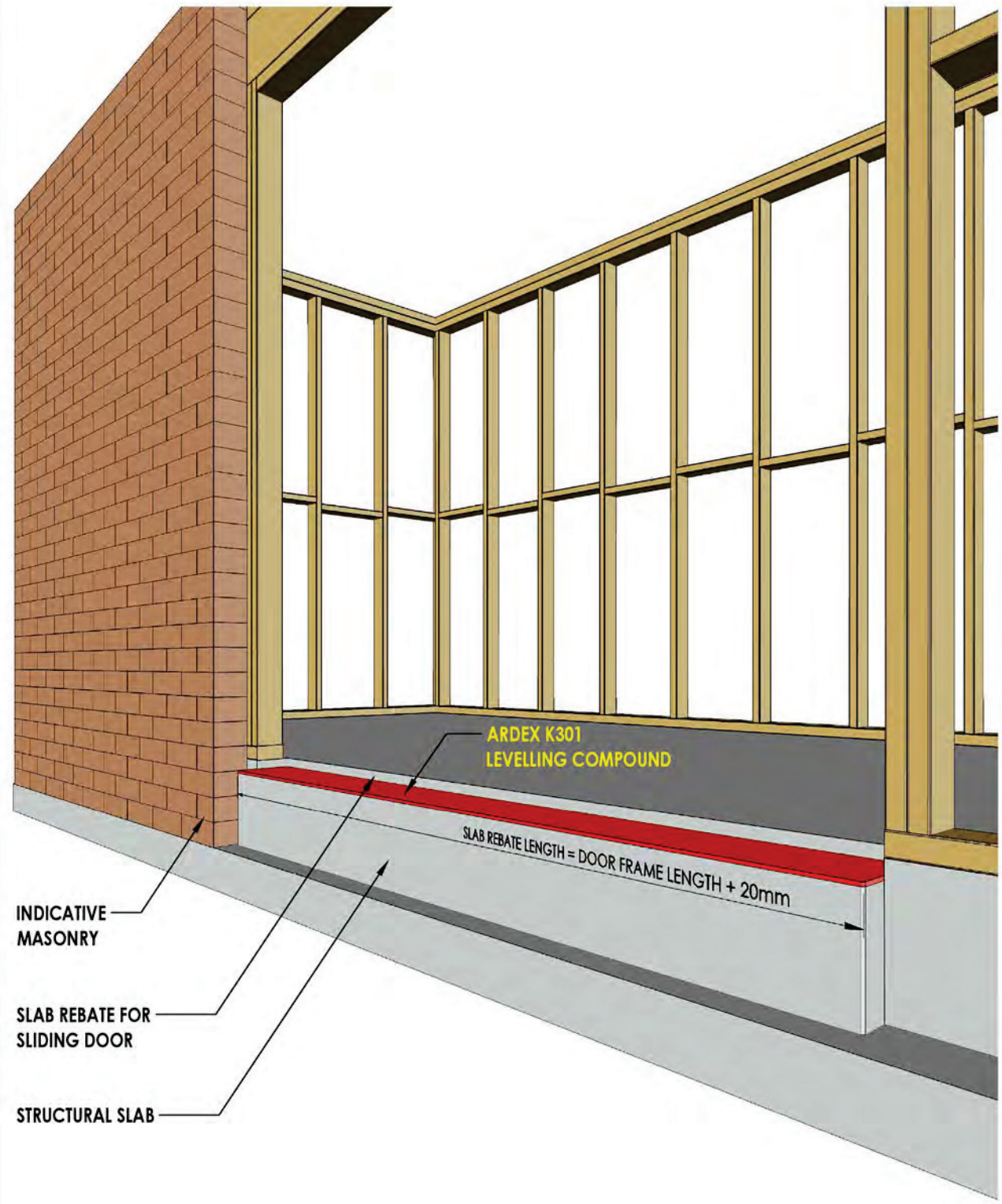
Project: **TYPICAL CONSTRUCTION DETAILS**

Title: **177mm FRAME SLIDING DOOR  
STRUCTURAL SLAB REBATE DETAILS**

Scale (A1)	Scale (A3)	Drawn	Date
		W.J.F.	NOV'22
Drawing No.	Rev.		
TD-177_02	A		



**177mm FRAME SLIDING DOOR**  
**(SLAB REBATE - SECTION DETAIL)**



**SLIDING DOOR SLAB REBATE**  
**(INDICATIVE PERSPECTIVE DETAIL)**

No.	Revision	By	Date
E	ISSUED FOR INFORMATION	W.J.F	05.07.23

**miglas**  
HIGH PERFORMANCE WINDOWS

57-59 Carletonbury Road  
Montrose VIC 3745  
Telephone: 03 9728 3999  
P.O. Box 32, Montrose, VIC 3745  
www.miglas.com.au

Project: **TYPICAL CONSTRUCTION DETAILS**

Title: **177mm FRAME SLIDING DOOR  
STRUCTURAL SLAB REBATE DETAILS**

Scale (A1)	Scale (A3)	Drawn	Date
		W.J.F	NOV'22
Drawing No.	TD-177_01		Rev.
			E